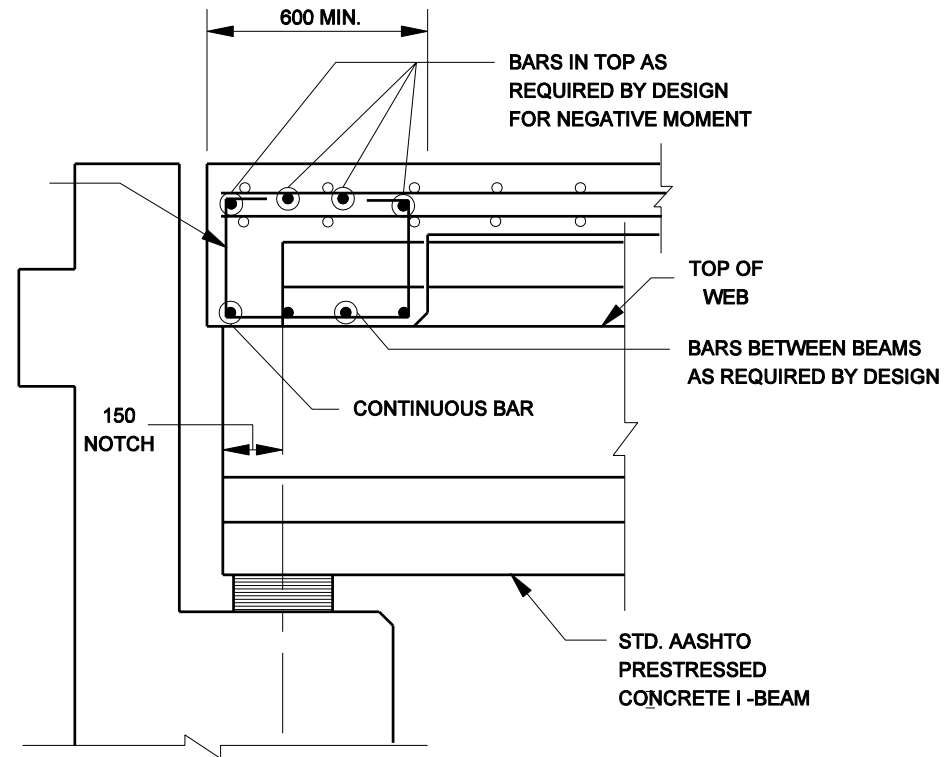


SKEW 25° OR LESS

NOTE: ALL REINFORCING STEEL SHALL BE EPOXY COATED.

#13 @ 300 MAX. SPA. BETWEEN BEAMS



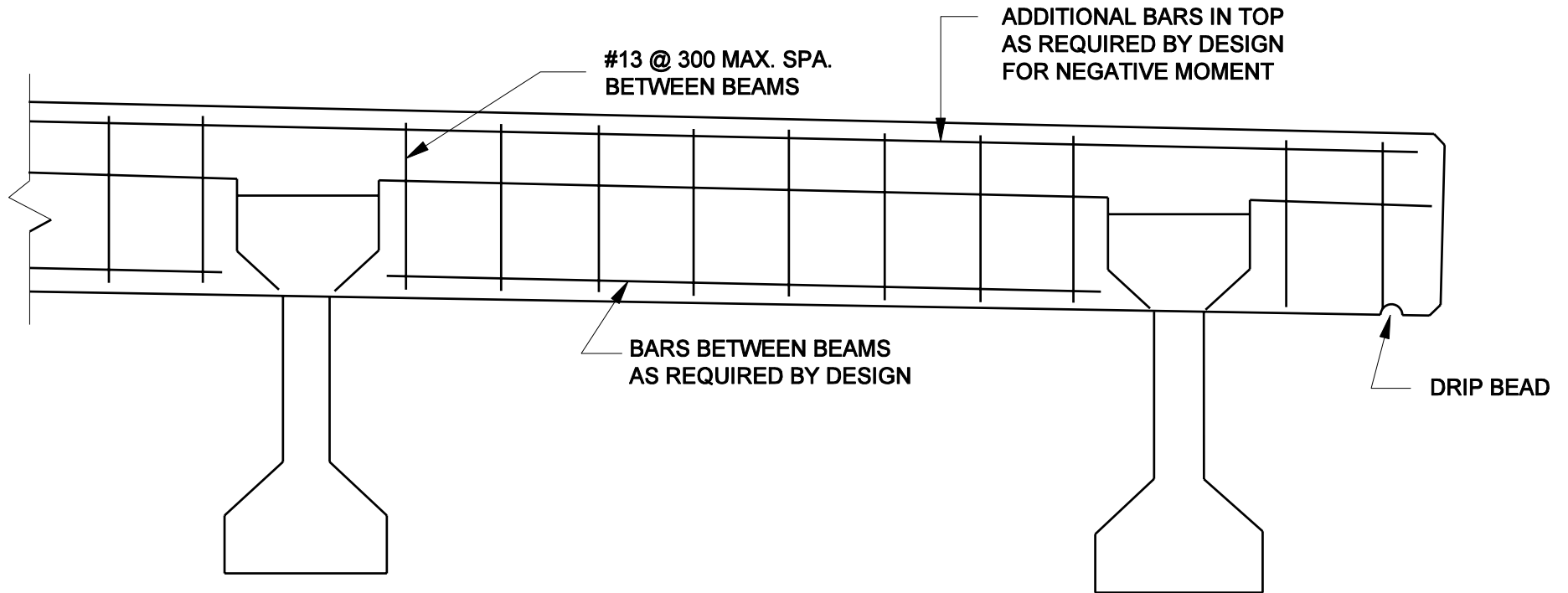
SKEW OVER 25°

SUGGESTED TRANSVERSE EDGE BEAM DETAILS (For AASHTO-Beams)

Figure 61-5 I

NOTE: ALL REINFORCING STEEL
SHALL BE EPOXY COATED.

NOTE: THE EDGE BEAM SHALL EXTEND
FROM COPING TO COPING.



SUGGESTED TRANSVERSE EDGE BEAM DETAILS
(For AASHTO I-Beams)

Figure 61-5 I
(Continued)